



CAMERAMAN'S DOPE SHEET

Print all names. Attach Press Clippings or other material.

If the story looked good to you, say so, if it didnt, say so too.

SUBJECT <u>AUX FIRE SERVICE EXERCISE</u>		
PLACE <u>LEEDS</u>	DATE <u>3-3-52</u>	
Cameraman <u>C. Baynes</u>	Recordist <u>—</u>	Footage Shot <u>700</u>
WHO ELSE COVERED Say if sound or silent <u>G. B. Sound</u>		
LIST OF SHOTS		
<u>ROLL (1) - DESERTED SQUARE</u>		
<u>FIRE ENGINES PULLING OUT FROM STATION.</u>		
<u>ENGINES RACING THRU STREETS.</u>		
<u>ROLL (2)</u>		
<u>ENGINES RACING THRU STREETS CONT.</u>		
<u>INSERTS ON ENGINE. TENSE FACES</u>		
<u>DRIVER P/U BELL RINGING ETC.</u>		
<u>ROLL (3)</u>		
<u>ENGINES PASS LEEDS TOWN HALL.</u>		
<u>AUX FIRE SERVICE MACHINES & PUMPS AT RENDEVOUS.</u>		
<u>VARIOUS C/U'S "BARNESLEY HULL" ETC</u>		
Was there anything unusual about the story?		
If you were assessing it editorially, what would you say?		



CAMERAMAN'S DOPE SHEET

Print all names. Attach Press Clippings or other material.
If the story looked good to you, say so, if it didnt, say so too.

SUBJECT		
SHEET 2		
PLACE	DATE	
Cameraman	Recordist	Footage Shot
WHO ELSE COVERED Say if sound or silent		
LIST OF SHOTS		
ROLL (4)		
AUX PUMPS & MEN IN ACTION.		
1/4 TYPES. CONNECTING HOSES ETC.		
1/2 of PUMPS + HOSES.		
M/S TANGLE OF HOSES		
C/U. CONTROL MACHINE MAN WORKING WHEEL.		
ROLL (5)		
CASUALTIES BEING ATTEMPTED TO.		
CARRIED TO AMBULANCE. ETC.		
1/4 WIRELESS OP.		
ROLL (6) - MORE PUMPS IN ACTION.		
Was there anything unusual about the story?		
If you were assessing it editorially, what would you say?		



CAMERAMAN'S DOPE SHEET

Print all names. Attach Press Clippings or other material.
If the story looked good to you, say so, if it didnt, say so too.

SUBJECT		
SHEET 3		
PLACE	DATE	
Cameraman	Recordist	Footage Shot
WHO ELSE COVERED Say if sound or silent		
LIST OF SHOTS		
1/s ACROSS CANAL SHOWING PUMPS IN ACTION ON FAR SIDE.		
CASUALTY BEING DRESSED (HE HAS BIG GASH IN STOMACH)		
CASUALTY " LOWERED DOWN LADDER.		
ROLL ⑦.		
VARIOUS 1/s PUMPS IN ACTION THRU SMOKE.		
e/s TYPES.		
m/s CIVIL DEFENSE WAGONS PASS THRU.		
Was there anything unusual about the story?		
If you were assessing it editorially, what would you say?		

QEMTRAZ

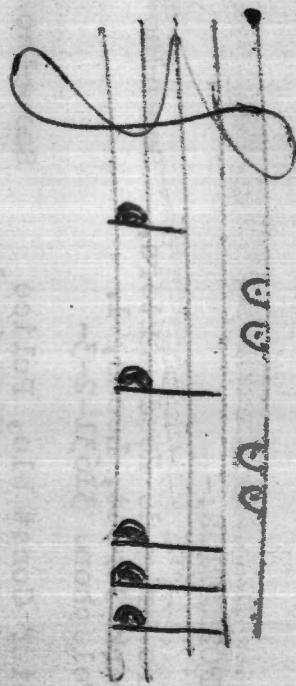
1-10 — 6-15

3-0 — 7-20

Page 4-15 — 8-5

5/4
5/4
6/4
11/6
9/2
11/4
9/1

2/4



ROLL ① DESERTED SQUARE.
 ENGINES PUMING OUT FROM STATION.
 TRACKING SHOTS THRU. KEEPS TOWN.
 ROLL ② INSERTS ON ENGINE
 TENSE FACES. DRIVER ETC
 BELL RINGING
 ROLL ③: